

Teil 10  
ankleben

Teil 16 ankleben

Teil 14  
ankleben

Teil 2 ankleben

Blatt 1/4  
Papier 160 g/m<sup>2</sup> oder stärker

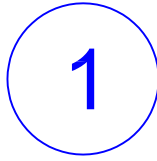
Teil 2 ankleben

Teil 3 ankleben

Teil 7 ankleben

Teil 4 ankleben

Teil 6 ankleben



Teil 4 ankleben

Teil 6 ankleben

Teil 5 ankleben

Teil 3 ankleben

Teil 3 ankleben

Teil 5 ankleben

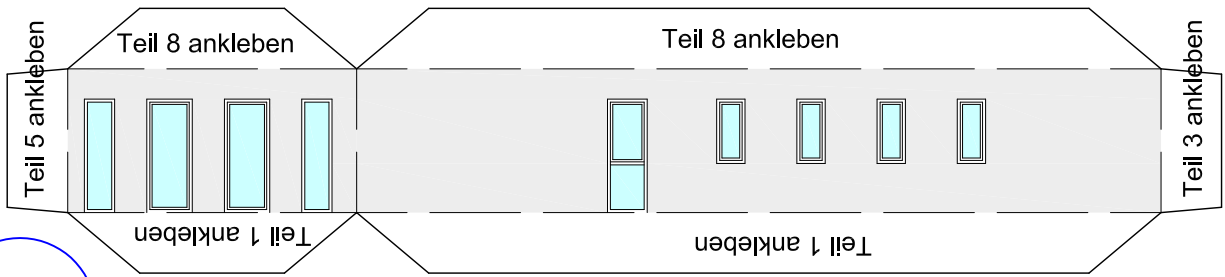
Teil 17 ankleben

Teil 12  
ankleben

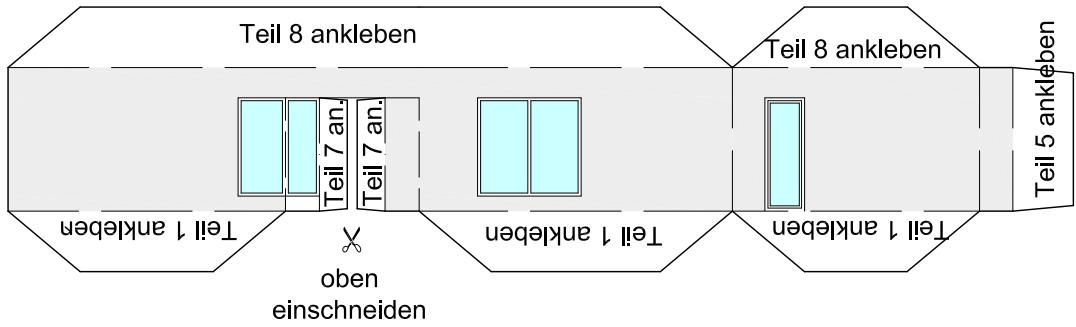
Teil 18 ankleben

Neuapostolische Kirche  
Dessau-Roßlau

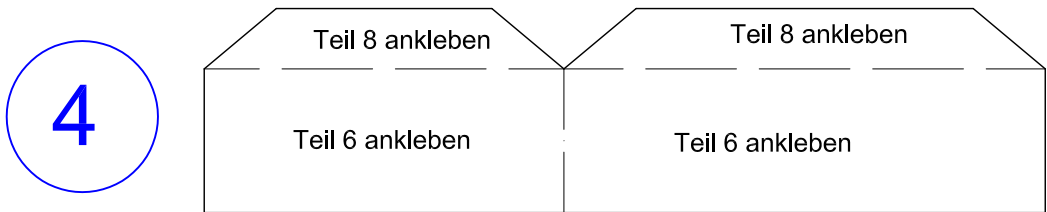




2



3

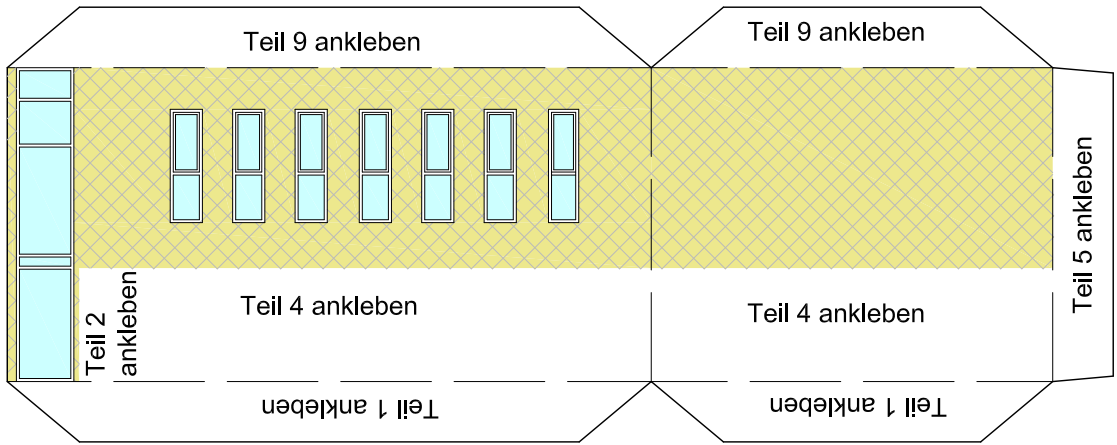


4



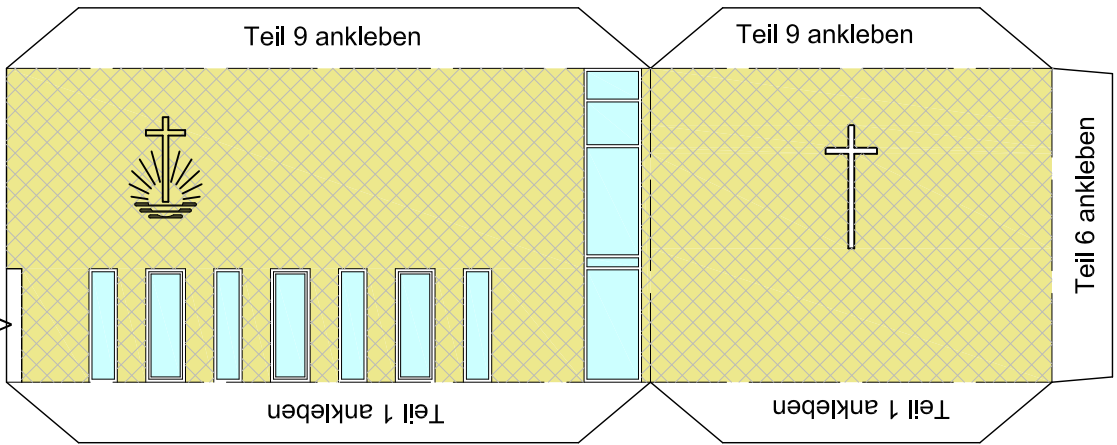
8

6



5

hier Teil 3 ankleben --->



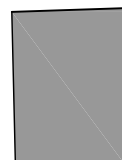
9

15

Blatt 3/4  
Papier 160 g/m<sup>2</sup>



13

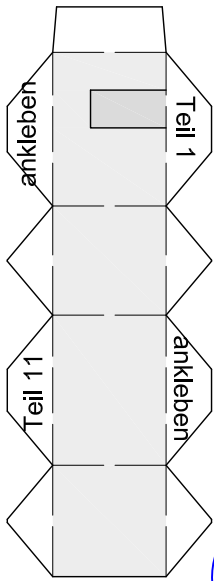


11

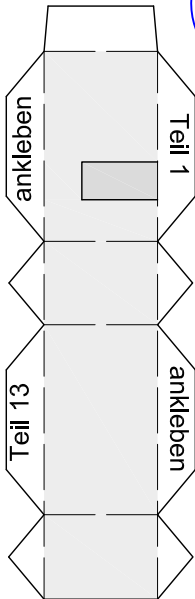
16

17

18

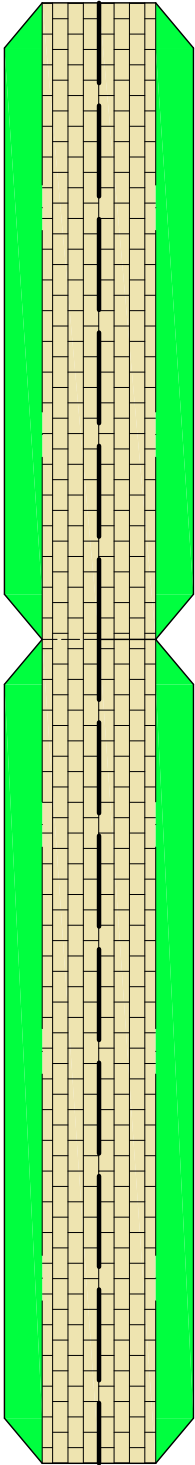
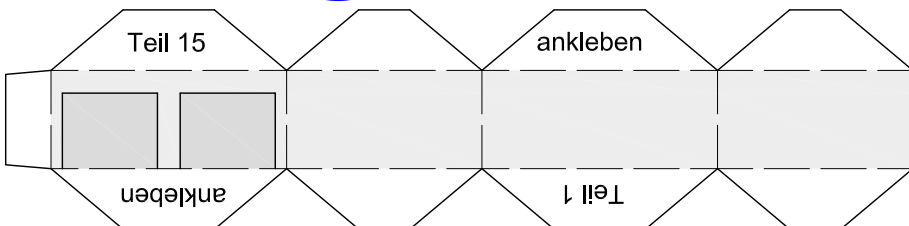


10

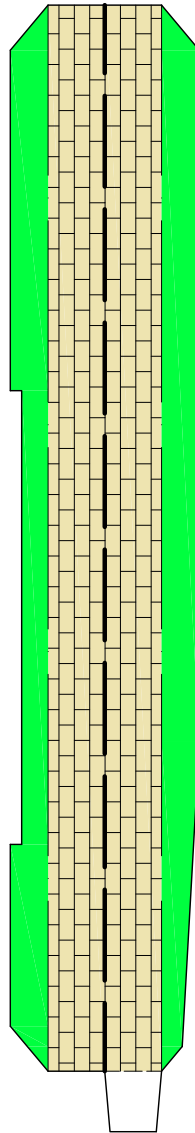


12

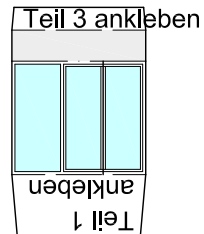
14



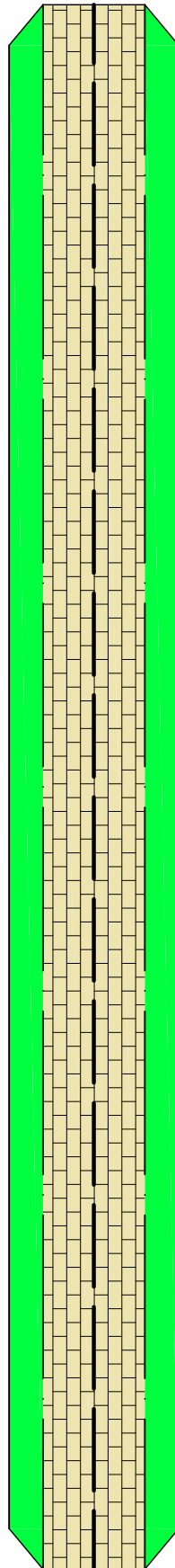
bis zur Hälfte einschneiden



Lasche in Teil 18 einschieben



7



Blatt 4/4 - Papier 100 g/m<sup>2</sup> oder stärker